

The Equity Gap: Part II

What We're Learning About Health & Well-Being in Thurston County



**Thurston Thrives Coordinating Council
& Partners Discussion**
January 27, 2020

Time Today

2

- Update on Assessment Process
- Discussion and Explore Opportunities
- Next Steps

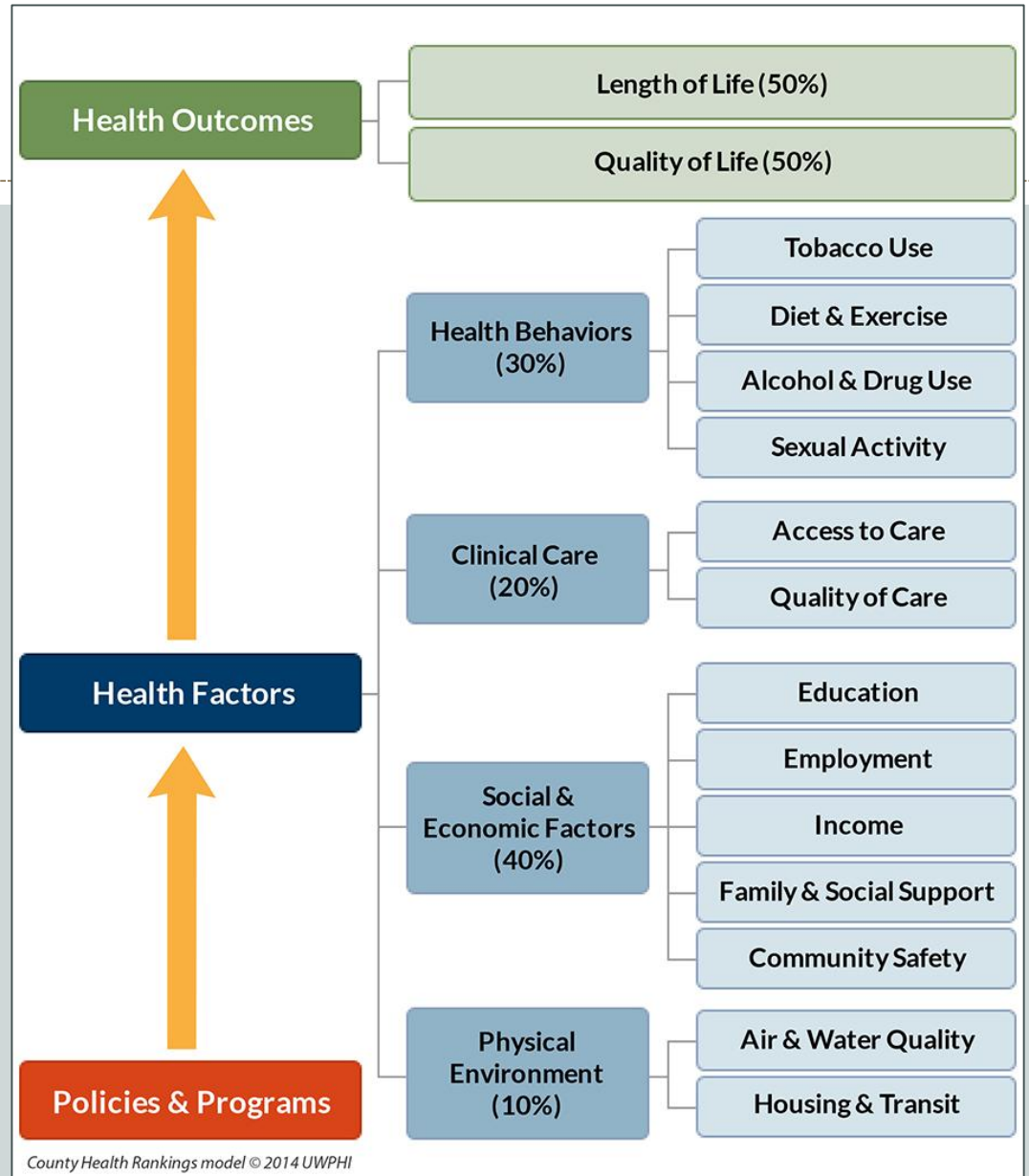




The Assessment Process

Model

- Today's Health
- Tomorrow's Health
 - Behavior
 - Health Care
 - Social & Economic Conditions
 - Physical & Built Environment



Assessment Process

5

Timeline

- Scope (Summer)
- Data (Summer-Winter)
- Discuss (Fall-Winter)
- Reports (Winter)



Key Steps



1. Establish Scope

2. Collect and Analyze Data

3. Obtain Input from Stakeholders

4. Document and Share Findings

5. Prioritize Areas and Population Focus

6. Develop or Enhance Improvement Plans

What is Health Equity?



- **Equity:**
 - Achieving the highest level of health and well-being for all people.
- **Disparity:**
 - Avoidable differences between groups of people created by societal barriers and systematic exclusion from opportunities.

*Health equity:
Commitment to a course of
action that reduces, and
ultimately eliminates,
health disparities so that
optimal health for all is
possible*

Equity

*Parkside Elementary
School, Tenino*



Disparities



- **Emphasis:**
 - Geography
 - Income
 - Age
 - Gender
 - LGBTQ
 - Race/ethnicity
 - Language
 - Disability status
 - Veteran status

Discussion

10



Community Readiness

- Influenced by
 - Stakeholders
 - Leadership
 - Efforts
 - Ownership
 - Knowledge
 - Resources
 - Communication



Discussion Questions

12

Age as a Focus

- Disparities
 - Birth to 24 years old
 - Age 60 and up
- How ready are we?
 - What do we have?
 - What do we need?

Place as a Focus

- Disparities
 - Rural residents
(inclusive of incorporated and unincorporated)
- How ready are we?
 - What do we have?
 - What do we need?

Discussion Questions

13

Topic as a Focus

- 2019 Collaborations
 - Local Forum Report
- What resonates?
 - Big picture focus areas?
 - Areas of attention?



Next Steps

14



Reports



- Data Snapshots:
 - Age
 - Income
 - Disability
 - Geography
 - People of Color (inclusive of Language)
 - Sexual Orientation and Gender Identity
 - Veterans (inclusive of Military Children)

2020 Activities

16



- Finish data snapshots (March).
- Schedule Equity Indicator Discussion Group (March).
- Host community health improvement plan discussions (April-June).
- Identify areas of focus and partnerships (August-September).
- Put actionable plans in place.

More Information

- Questions? Requests?
 - Mary Ann O'Garro, 360-867-2525,
ogarrom@co.thurston.wa.us



- Healthy Equity Webpage
 - <http://bit.ly/PHSSHealthEquity>