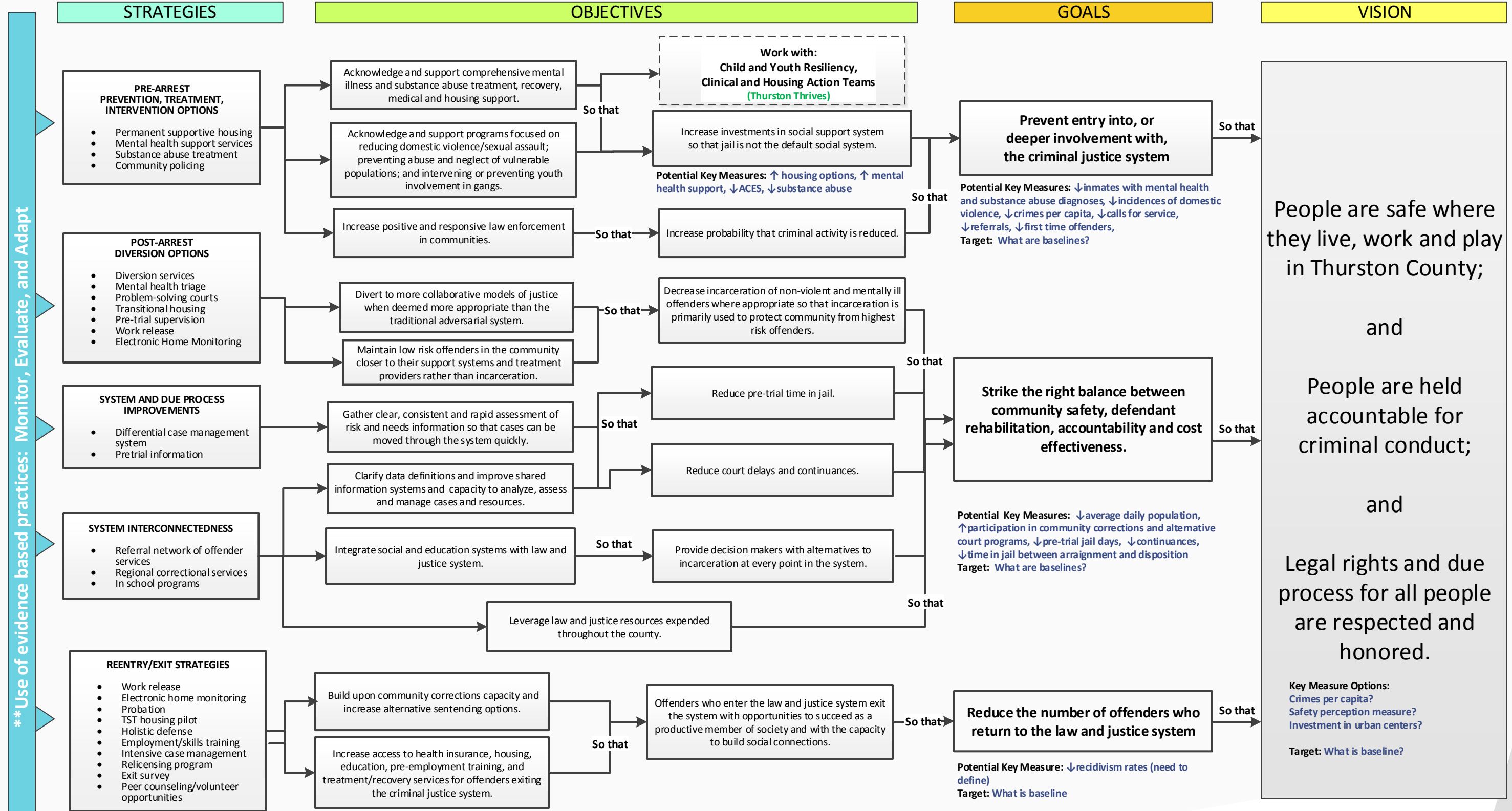


# Public Safety and Justice – Strategy Map

We Value Collaboration, Prevention, Access, Fairness, Timeliness, Responsiveness, Professionalism, Creativity, Innovation, and Integration



\*\* Use of evidence based practices: Monitor, Evaluate, and Adapt

A functional law and justice system depends upon a robust social support system

V.6 March 19, 2015  
 Adopted by  
 Thurston County  
 Law & Justice  
 Council